

MONTHLY MEMBERSHIP PROGRESS REPORT

LOCATION PENNSYLVANIA

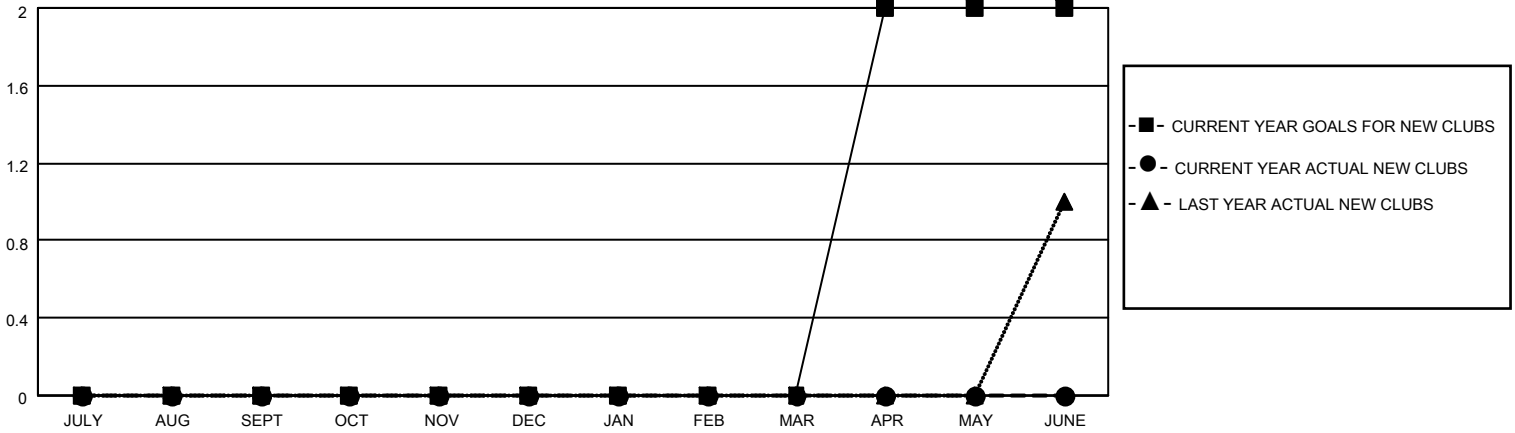
District 14 K

Results as of: 5/31/2022

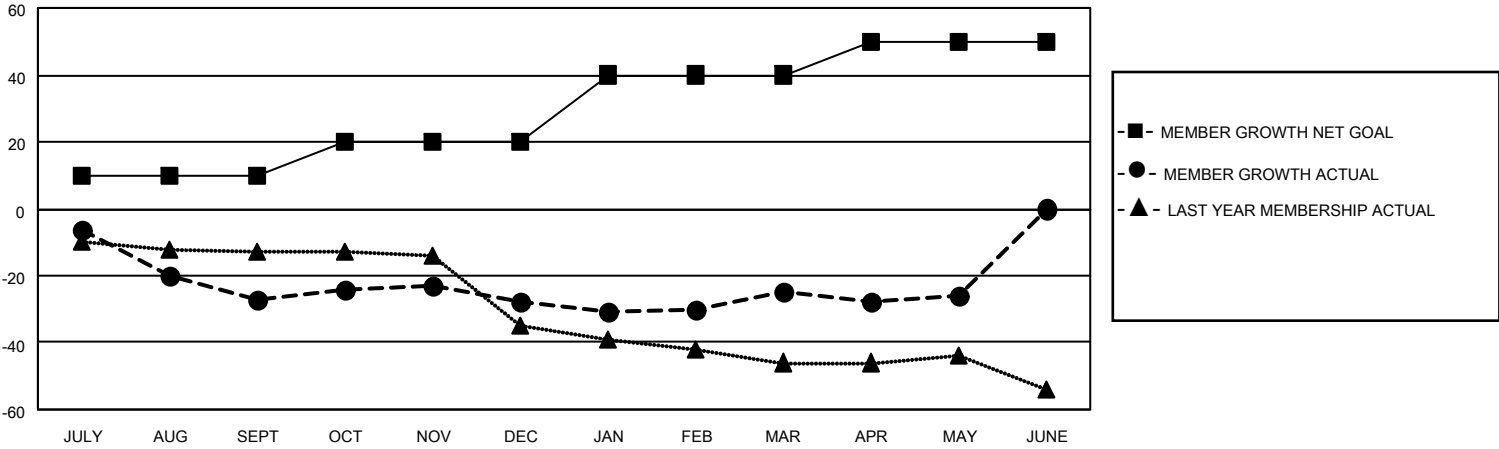
Clubs			
RESULTS FOR 2021-2022			
QUARTER	NEW CLUB GOAL	NEW CLUBS	DROPPED CLUBS
JULY/AUG/SEPT	0	0	3
OCT/NOV/DEC	0	0	0
JAN/FEB/MAR	0	0	1
APR/MAY/JUNE	2	0	0

Members			
RESULTS FOR 2021-2022			
QUARTER	MEMBER GROWTH NET GOAL	MEMBER GROWTH ACTUAL	DROPPED MEMBERS ACTUAL (including transfers)
JULY/AUG/SEPT	10	10	37
OCT/NOV/DEC	10	34	30
JAN/FEB/MAR	20	21	14
APR/MAY/JUNE	10	14	14

GOALS AND ACTUAL NEW CLUBS CUMULATIVE



GOALS AND ACTUAL MEMBERS CUMULATIVE



DROPPED CLUBS: 4	
DROPPED MEMBERS	
DECEASED	18
CLUB CANCELLED	17
OTHER	60
TOTAL	95

17 CLUBS OF 32 ADDED 1 OR MORE NEW MEMBERS

[CLICK HERE FOR CUMULATIVE MEMBERSHIP DATA](#)

<u>GENDER DISTRIBUTION</u>	
MALE	482 (65.58%)
FEMALE	252 (34.29%)
NON BINARY	0 (0.00%)
PREFER NOT TO ANSWER	1 (0.14%)
TOTAL FAMILY UNIT MEMBERS	
	99
FAMILY MEMBERS PAYING HALF DUES	
	51